



Knitting Instructions



LANA GROSSA

DESIGN 5 · SCARF · Condito

Approx. 64 1/2" x 9" [164 x 23 cm]
Materials: approx. 1 ball (approx. 10yd/9m) of Lana Grossa **Condito** (74% merino wool, 10% polyacryl, 8% mohair, 8% polyamide) in olive/khaki/petrol blue/black-brown/natural (col 5). Black elastic thread. Blunt yarn needle.

Here's how:
 Stretch yarn apart to a width of approx. 4 1/2" [11.5 cm]. Mark half point of strand and place 2 strands in a zig zag parallel to each other on a flat surface. Thread yarn needle with approx. 6' [2 m] of elastic thread. Beginning at the turning point, sew inside edges of the 2 strands tog with running stitch. Push piece together until it is approx. 32 1/4" [82 cm] long and sew inside edges tog with running stitch, offset to first row of running stitch. Sew ends of elastic thread to yarn with back stitch to secure. Loop yarn ends around each other and sew with matching sewing thread. You may also cut the yarn in half, lay halves on top of each other and stretch apart. Sew center of halves tog with running stitch, then proceed as for first version. Carefully knot yarn ends to secure.



DESIGN 6 · SCARF · Colore

Approx. 67" x 7 3/4" [170 x 20 cm]
Materials: approx. 2 balls (approx. 57yd/52m each) of Lana Grossa **Colore** (53% merino wool, 47% polyacryl) in rust/brown/ochre (col 2); size 15 [10mm] needles.

Here's how:
Slip Garter Stitch Selvage: on every row, slip first st kwise and k last st.
Drop Stitch Pattern: row 1: * k1, yo, rep from * to end. Row 2: * p1, yo, dropping all yo's from previous row to elongate sts, rep from * to end. Row 3: * k1, yo, dropping all yo's from previous row to elongate sts, rep from * to end. Work rows 1-3 once, then repeat rows 2 and 3 throughout.

Gauge: 4.5 sts and 6.5 rows = 4" [10 cm] in drop st pat.
Scarf: cast on 10 sts. P 1 WS row, then work in drop st pat, remembering to work slip garter st selvage, until piece measures 67" [170 cm] from cast-on and almost all the yarn from 2nd ball has been used. Bind off all sts loosely. Carefully weave in ends.



DESIGN 10 · SCARF · Effetto

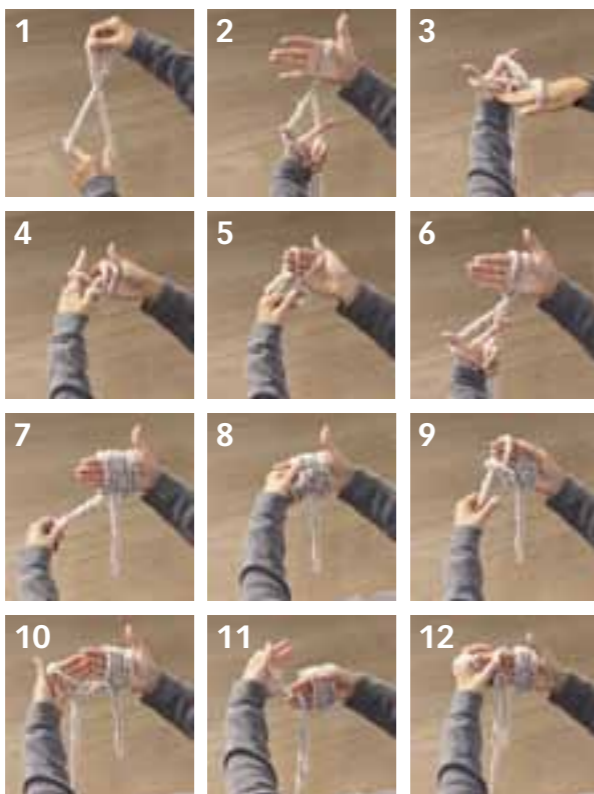
Approx. 53" x 8 3/4" [135 x 22 cm]
Materials: approx. 1 ball (approx. 38yd/35m) of Lana Grossa **Effetto** (53% merino wool, 47% polyacryl) in grège/light/dark grey (col 9).

Here's how:
Garter st: k every row.
Gauge: 2.5 sts and 1.75 rows = 4" [10 cm] in garter st, finger knitted.
 Scarf is knitted without needles. First, make a slip knot as shown in photo 1. Place slip knot over right hand as shown in photo 2. * Wrap the yarn from the ball over your left index finger, wind the tail end around your left thumb as shown in photo 2.

Next, insert 4 fingers of your right hand upwards in the loop on your thumb and draw the yarn from the ball through the loop to form a stitch as shown in photos 3 and 4. Tighten the loop as shown in photo 5. The 2nd loop (stitch) is now over your right hand as shown in photo 6. Repeat from * until you have 6 loops over your right hand as shown in photo 7.

Next, knit the first row as foll: slide the yarn from the ball with your left hand from left to right through the last cast-on st on your right hand as shown in photo 8, then sl last cast-on st from right hand. Put the new st over your right hand and tighten as shown in photo 9, then sl st to left hand as shown in photo 10.

Next, hold the st that's over your left hand with your left thumb, and with the forefinger and middle finger of your right hand, grasp the yarn from the ball as shown in photo 11 and pull it from left to right through the next cast-on st on your right hand as shown



DESIGN 1 · FRINGE SCARF · Colore
Approx. 55" [140 cm] long, approx. 6 3/4" [17 cm] wide, including loop fringe
Materials: approx. 1 ball (approx. 57yd/52m) of Lana Grossa **Colore** (53% merino wool, 47% polyacryl) in grey/brown/mocha (col 10); size 19 [15mm] needles.
Here's how:
Main Pattern: row 1 [RS]: k6. Row 2 [WS]: bring yarn to front of work, sl3 pwise, bring yarn to back of work, k3. Repeat rows 1 and 2 throughout.
Scarf: cast on 6 sts and work in main pat until almost all the yarn has been used and ending with a RS row. Last WS row: bind off 2 sts in purl and draw yarn end through st on RH needle. Sl remaining 3 sts off LH needle and unravel down to cast-on row for loop fringe.



DESIGN 2 · RUFFLED COWL · Condito

Approx. 55" [140 cm] in circumference and approx. 3 1/2" [9 cm] wide
Materials: approx. 1 ball (approx. 10yd/9m) of Lana Grossa **Condito** (74% merino wool, 10% polyacryl, 8% mohair, 8% polyamide) in pink/orange/fuchsia/black/grey (col 1); black elastic cord [by Prym, item 971064], blunt yarn needle.

Here's how:
 Cut elastic cord in half. Loosely knot one end of the cord with one end of Condito to hold cord in place. Stretch Condito apart widthwise and thread yarn needle with elastic cord. Carefully thread cord along center of yarn. Untie knot, making sure elastic cord does not slip out of yarn. Tie yarn and cord ends securely to form a loop. Cut yarn ends.



DESIGN 7 · COWL · Colore

Approx. 36 1/4" [92 cm] in circumference and approx. 17" [43 cm] tall
Materials: approx. 1 ball (approx. 57yd/52m) of Lana Grossa **Colore** (53% merino wool, 47% polyacryl) in dark grey/charcoal (col 8).

Here's how:
Garter st: k every row.
Gauge: 2.5 sts and 2 rows = 4" [10 cm] in garter st, finger knitted.
Cowl: following instructions for finger knitting (see design 10), cast on 10 sts and work in garter st for 18 rows and piece measuring approx. 36 1/4" [92 cm] from cast-on. Bind off all sts. With matching sewing thread, sew cast-on and bind-off edge tog. Carefully weave in all ends.



DESIGN 8 · HAT · Effetto

Circumference 22" – 22 3/4" [56-58 cm]
Materials: approx. 2 balls (approx. 38yd/35m each) of Lana Grossa **Effetto** (53% merino wool, 47% polyacryl) in jeans/grey-green/midnight (col 3); size 15 and 17 [10 and 12.75mm] needles.

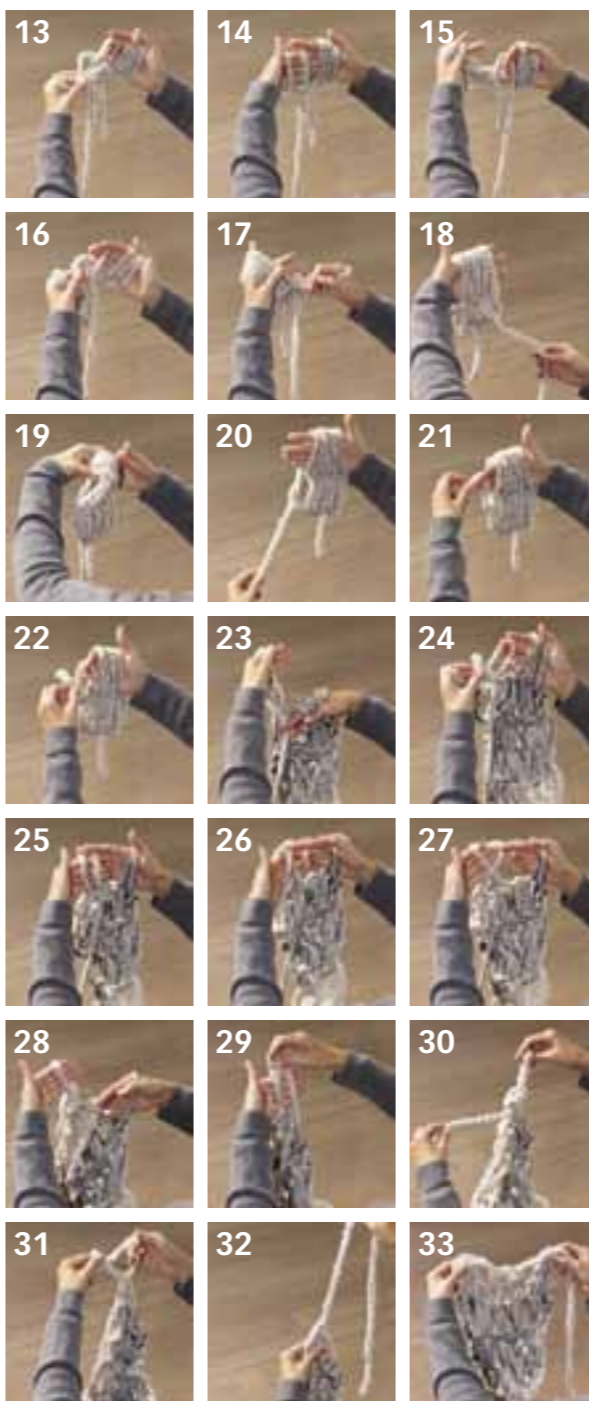
Here's how:
Rib Pattern: k2, p2.
St st: k on RS; p on WS.
Gauge: 5 sts and 7 rows = 4" [10 cm] in St st on larger needles.
Hat: with smaller needles, cast on 30 sts. Beg with a WS row, work in rib pat for 1 1/2" [3.5 cm]. Change to larger needles and work in St st for 6 1/2" [16.5 cm]. Next [dec] row: selvage st, k2tog every 2nd and 3rd st, selvage st – 9 sts decreased and 21 sts remain on needle. Work 3 rows even in St st. Next [dec] row: selvage st, k2tog 9 times, selvage st – 12 sts. Work 1 WS row even in St st. Next [dec] row: k2tog across row – 6 sts. Cut yarn, draw yarn end through remaining 6 sts, pull tight and weave in end. Sew seam. Carefully weave in ends.



in photo 12. Sl cast-on st from right hand as shown in photo 13, then place new st over left hand. Continue in this manner until all 6 cast-on sts have been knitted as shown in photos 14-18 and 6 sts are over left hand. Pull sts down to even out.

Next, carefully put loops back over right hand, turning them around so that the yarn from the ball is at left of work as shown in photos 19 and 20. Knit row 2: grasp the yarn from the ball with your right forefinger and middle finger and pull it through first loop (= last knitted st) on your right hand as shown in photo 21 and 22 and sl it to your left hand. Continue in this manner, following photos 11 through 18, until all 6 sts on your right hand have been knitted and are once again over your left hand. Carefully put sts back over right hand, turning them around so that the yarn from the ball is at left of work as shown in photo 19 and 20. Work a total of 22 rows in this manner, making sure to hold the sts that are over your left hand firmly with your left thumb to prevent them from sliding off.

Next, bind off as foll: knit first st on your right hand and place it over your left hand. Knit 2nd st on your right hand and pull 2nd st through first st



DESIGN 3 · CROCHETED SCARF · Condito
Approx. 63" x 3 1/4" [160 x 8 cm]
Materials: approx. 1 ball (approx. 10yd/9m) of Lana Grossa **Condito** (74% merino wool, 10% polyacryl, 8% mohair, 8% polyamide) in marine/turquoise/olive/natural/petrol blue (col 4).
Here's how:
 Scarf is finger crocheted. First, make a slip knot. Next, with thumb, forefinger and middle finger, reach through loop from front to back and pull yarn through loop. Repeat until all the yarn has been used up. With matching sewing thread, sew down ends to secure.



DESIGN 4 · COWL · Colore

Approx. 51 (26)" [130 (66 cm) in circumference and approx. 6 (20 1/2)" [15 (52) cm] tall

Instructions are given for long cowl. Figures in parenthesis refer to short cowl. When only one figure is given, it applies to both cowl.
Materials: approx. 1 ball (approx. 57yd/52m) of Lana Grossa **Colore** (53% merino wool, 47% polyacryl) in green/emerald (col 4) and approx. 3 balls in pink/fuchsia/orange (col 1); size 17 [12.75mm] (15 [10mm]) circular needle, 24" [60cm] long.
Here's how:
Drop Stitch Pattern: rnd 1: * k1, yo, rep from * around. Rnd 2 and all foll rnds: * k1, yo, dropping all yo's from previous rnd to elongate sts, rep from * around.
Gauge: 4 (4) sts and 5 (6) rnds = 4" [10 cm] on larger (smaller) needles.
Cowl: with larger (smaller) needles, cast on 54 (28) sts and join for working in rnds. Work in drop st pat until piece measures 6 (20 1/2)" [15 (52) cm] from cast-on. Bind off all sts loosely. Carefully weave in ends.



ABBREVIATIONS
 approx. = approximately, dec = decrease(s), decreasing, foll = following, inc = increase(s), increasing, k = knit, LH = left hand, m = meter, p = purl, pat = pattern, pwise = purlwise (as if to purl), rem = remaining, rep = repeat, RH = right hand, rnd = round, RS = right side, sl = slip, st(s) = stitch(es), tog = together, WS = wrong side, yd = yards, yo = yarn over

DESIGN 9 · KIMONO JACKET · Effetto

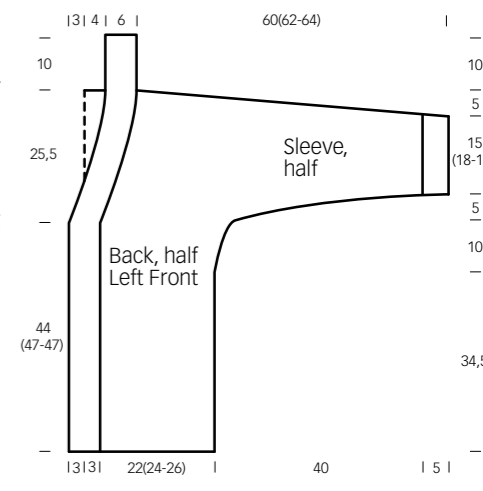
Size 36/38 (40/42 – 44/46), Finished Bust 42 1/2 (45 3/4, 48 3/4)" incl front bands, Length 27 1/4 (28 1/2, 28 1/2)"

Instructions are given for first size. Figures in parenthesis refer to larger sizes. When only one figure is given, it applies to all sizes.

Materials: approx. 9 (10, 11) balls (approx. 38yd/35m each) of Lana Grossa **Effetto** (53% merino wool, 47% polyacryl) in jeans/grey-green/midnight (col 3); size 15 [10mm] needles, size 10 [15mm] circular needle, 40" [100cm] long.
Here's how:
Garter st: k every row.
St st: k on RS; p on WS.
Gauge: 5 sts and 7.5 rows = 4" [10 cm] in St st.
Back: cast on 27 (29, 31) sts and work in St st until back measures 13 1/2" [34.5 cm] from cast-on. Shape sleeves: inc 1 st each end of needle on next row, then every foll 4th row once. Cast on 10 sts at beg of next 2 rows and 11 sts at beg of foll 2 rows – 73 (75, 77) sts. Change to circular needle and position sts as foll: work 3 sts in garter st for right sleeve band, work 67 (69, 71) sts in St st, work 3 sts in garter st for left sleeve band. Work in pat as established for 6 (7, 7)" [15 (18, 18) cm]. Shape shoulders/overarms: bind off 16 sts at each shoulder/overarm edge once and 15 (16, 17) sts once. Bind off remaining 11 back neck sts.

Left Front: cast on 16 (17, 18) sts and position sts as foll: work 12 (13, 14) sts in St st, work 4 sts in garter st for front band. Work in pat as established until same length as back to sleeve shaping. Work sleeve shaping at right edge same as for back, then position sts as foll: work 3 sts in garter st for left sleeve band, work in St st to last 4 sts, work 4 sts in garter st for front band. Work in pat as established until left front measures 17 1/4 (18 1/2, 18 1/2)" 44 (47, 47) cm] from cast-on. Shape front neck: dec 1 st at left edge on next row, then every foll 4th row once, then every foll 6th row twice, working decs as foll: work in pat to 2 sts before front band sts, k2tog, work in pat to end. At same time, when same length as back to shoulder, shape shoulder/overarm at right edge same as for back – 4 front band sts remain. Next, cast on 1 st at right edge of front band – 5 sts and work in garter st for 4" [10 cm]. Bind off all sts.

Right Front: work same as for left front, reversing all shaping and working front neck decs as foll: work 4 sts in garter st for front band, SKP [sl1 kwise, k1, pss0], work in pat to end.
Finishing: pin pieces to measurements and block with damp towels. Sew all seams. With WS facing, sew left and right front bands tog, then sew side edges of front bands to back neck edge.



as shown in photos 23 and 24. Cont in this manner to end of row as shown in photos 25 - 29. Pull yarn end through last st as shown in photos 30 - 32. Photo 33 shows the finished scarf. Carefully weave in ends and you are done!

COVER DESIGN · HAT · Effetto

Circumference 22" – 22 3/4" [56-58 cm]
Materials: approx. 2 balls (approx. 38yd/35m each) of Lana Grossa **Effetto** (53% merino wool, 47% polyacryl) in grège/light/dark grey (col 9); size 15 and 17 [10 and 12.75mm] needles.

Here's how:
Rib Pattern: k2, p2.
Seed st: k1, p1; on foll rows, k all p sts, p all k sts.
Gauge: 5 sts and 8 rows = 4" [10 cm] in seed st on larger needles.
Hat: with smaller needles, cast on 26 sts. Working first st after selvage st as k1 and last st before selvage st as k1, work in rib pat for 1 1/2" [4 cm]. Change to larger needles and work as foll: selvage st, work in seed st to last st, selvage st. Work in pat as established until hat measures 6 3/4" [17 cm] from rib pat, ending with a WS row. Next RS [dec] row: selvage st, k2tog to last st, selvage st – 14 sts. Work next WS row in seed st. Next RS [dec] row: k2tog to end of row – 7 sts. Cut yarn, draw yarn end through remaining 7 sts, pull tight and weave in end. Sew seam. Make a 1 1/4" [11 cm] pompom and sew to top of hat.
Tip: for detailed instructions on how to make a pompom, visit www.lanagrossa.com/service.



COVER DESIGN · COWL · Effetto

Approx. 30" [76 cm] in circumference and approx. 19 3/4" [50 cm] tall

Materials: approx. 3 balls (approx. 38yd/35m each) of Lana Grossa **Effetto** (53% merino wool, 47% polyacryl) in grège/light/dark grey (col 9); size 15 [10mm] circular needle, 24" [60cm] long.
Here's how:
Drop Stitch Pattern: rnd 1: * k1, yo, rep from * around. Rnd 2 and all foll rnds: * k1, yo, dropping all yo's from previous rnd to elongate sts, rep from * around.
Gauge: 4 sts and 6 rnds = 4" [10 cm] in drop st pat.
Cowl: cast on 30 sts and join for working in rnds. Work in drop st pat until piece measures 19 3/4" [50 cm] from cast-on. Bind off all sts loosely. Carefully weave in ends.

