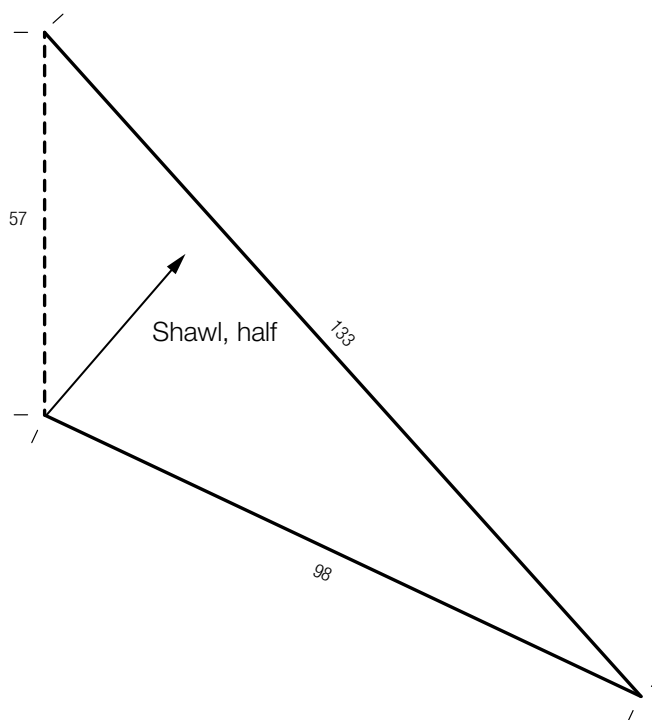


MODEL OF THE MONTH

from Filati Handknitting No. 64



SHAWL - Allegro

Approx. 266 x 57 cm

Materials: 300 g of Lana Grossa **Allegro** (58% viscose, 42% cotton; 115 m/50 g) in Turquoise/Brick/Reed/Olive (col 16). Size 5 mm circular needles, 60, 100 and 120 cm long.

Garter lace pattern: Work according to chart. Numbers at right edge of chart indicate RS rows; numbers at left edge of chart indicate WS rows. Beg chart pat with sts between arrows. Work 4 yo increases on chart

row 1 as shown = 16 sts, then work yo increases at beg and end of every row and work yo increases at center spine every RS row = 48 sts after chart row 12 and 84 sts after chart row 24. Work rows 1 – 24 once, then repeat rows 13 – 24 throughout, continuing to work increases as established.

Gauge: 16 sts and 32 rows = 10 x 10 cm in garter lace pat on size 5 mm needles, measured after blocking.

Instructions: With shortest size 5 mm circular needle, cast on 12 sts and work in garter lace pat according to chart for 126 rows. You will have 390 sts on the needle and shawl measures approx. 39 cm, measured along arrow on schematic. Change to longer circular needles as stitch count increases. Loosely bind off all sts in knit.

Finishing: Pin shawl to measurements and block.



MODEL OF THE MONTH

from Filati Handknitting No. 64



Chart

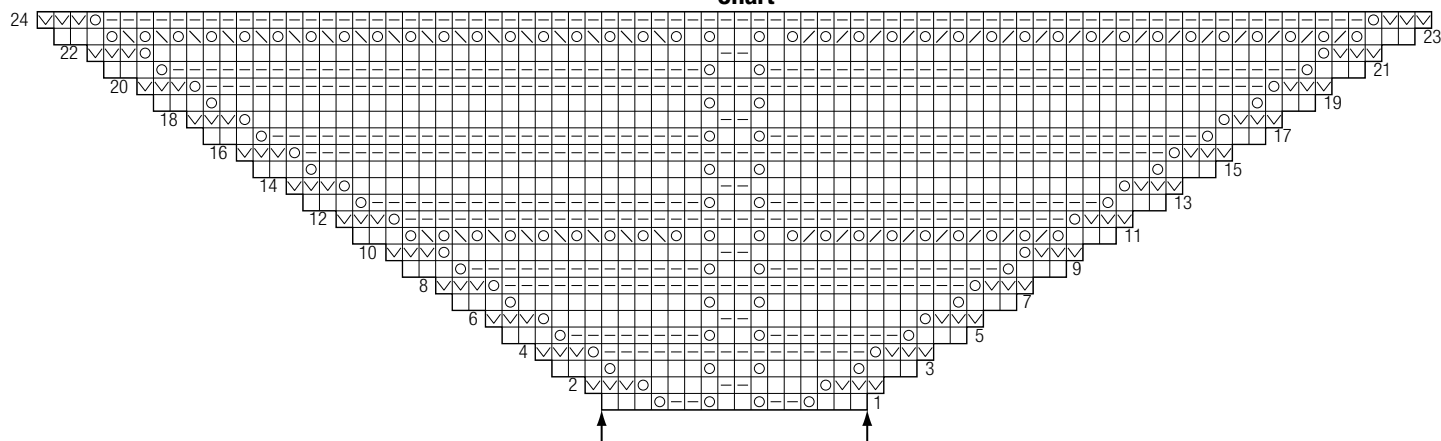


Chart key:

- ⊞ = selvage st
- = k1
- ▬ = p1
- = yo
- ▤ = k2tog
- ▮ = SKP: slip 1 st as if to knit, k1, pass slipped st over knitted st

- ☑ = slip 1 st as if to purl with yarn in front of work

